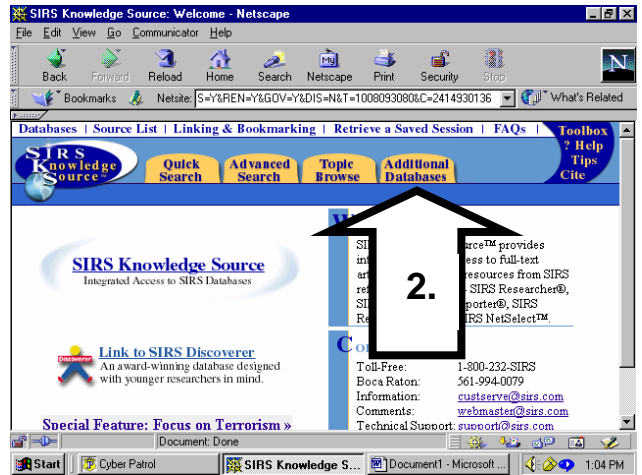
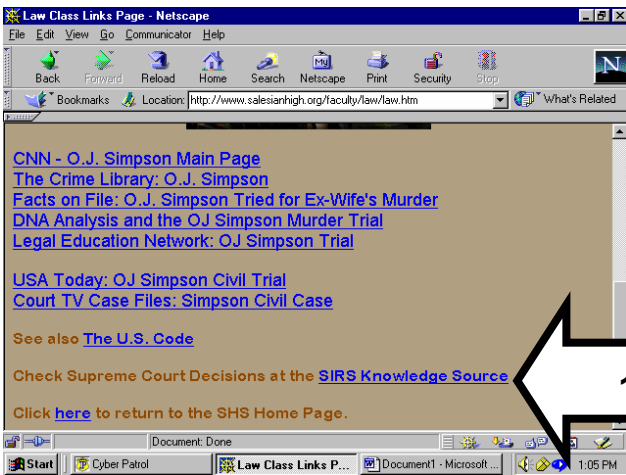


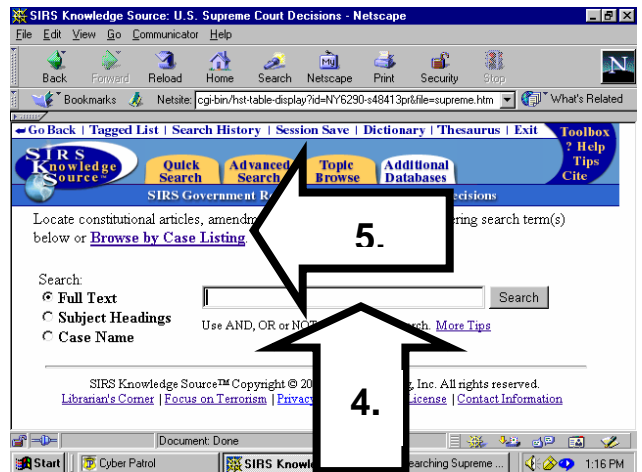
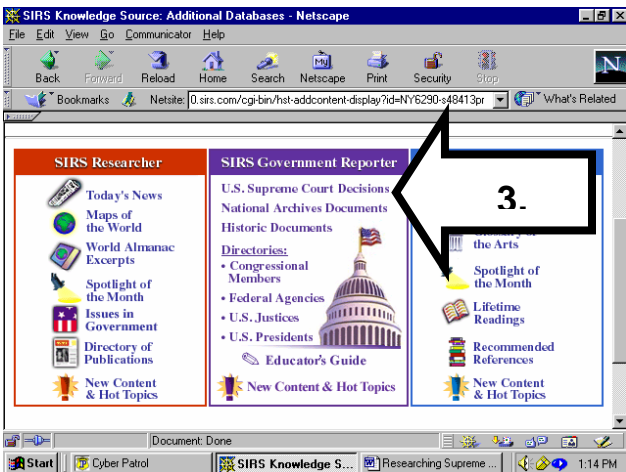
Researching Supreme Court Decisions

Senior Law Elective

1. At the **Senior Law Elective Links Page**, click on **SIRS Knowledge Source**
2. At the **SIRS Knowledge Source Page**, click on the **Additional Databases** tab



3. Click on **U.S. Supreme Court Decisions**
4. Use the **Search** text box to search for a particular court case, or
5. Click on **Browse by Case Listing**



6. Browse for a court case by using the alphabetical list at the top of the page

